



**RELIABILITY ANALYSIS OF STEAM TURBINE INSTRUMENTATION
USING THE FAILURE MODE AND EFFECT ANALYSIS (FMEA)
METHOD AT PT. PLN NUSANTARA POWER UP TENAYAN**

TUGAS AKHIR

Ditugaskan Sebagai Salah Satu Syarat Untuk Memperoleh Gelar Sarjana Teknik Pada
Program Studi Teknik Elektro Fakultas Sains dan Teknologi



Oleh :

ANZHAR DEVALMA
12050510346

**PROGRAM STUDI TEKNIK ELEKTRO
FAKULTAS SAINS DAN TEKNOLOGI**

**UNIVERSITAS ISLAM NEGERI SULTAN SYARIF KASIM RIAU
PEKANBARU**

2024

Hak Cipta Dilindungi Undang-Undang

1. Dilarang mengutip sebagian atau seluruh karya tulis ini tanpa mencantumkan dan menyebutkan sumber:
 - a. Pengutipan hanya untuk kepentingan pendidikan, penelitian, penulisan karya ilmiah, penyusunan laporan, penulisan kritik atau tinjauan suatu masalah.
 - b. Pengutipan tidak merugikan kepentingan yang wajar UIN Suska Riau.
2. Dilarang mengumumkannya dan memperbanyak sebagian atau seluruh karya tulis ini dalam bentuk apapun tanpa izin UIN Suska Riau.



LEMBAR PENGESAHAN

ANALISIS KEANDALAN INSTRUMENTASI TURBIN UAP DENGAN METODE FAILURE MODE AND EFFECT ANALYSIS (FMEA) DI PT. PLN NUSANTARA POWER UP TENAYAN

TUGAS AKHIR

oleh :

ANZHAR DEVALMA
12050510346

Telah dipertahankan di depan Sidang Dewan Penguji
sebagai salah satu syarat untuk memperoleh gelar Sarjana Teknik
Fakultas Sains dan Teknologi Universitas Islam Negeri Sultan Syarif Kasim Riau
di Pekanbaru, pada tanggal 27 Desember 2024

Pekanbaru, 27 Desember 2024

Mengesahkan,

Dekan Fakultas Sains dan Teknologi



Dr. Hartono, M.Pd
NIP. 19640301 199203 1 003

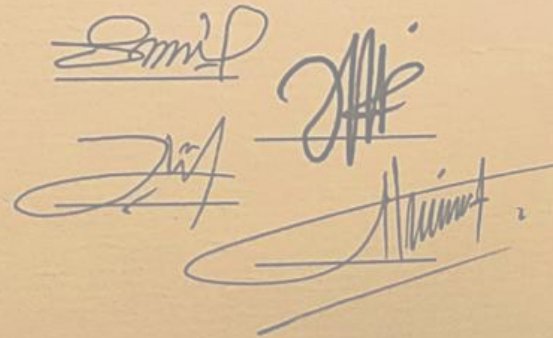
Ketua Prodi Teknik Elektro



Dr. Zulfatri Aini, S.T., M.T
NIP. 19721021 200604 2 001

DEWAN PENGUJI:

- Ketua** : Sutoyo, S.T., M.T.
- Sekretaris** : Jufrizel, S.T., M.T
- Anggota 1** : Aulia Ullah, S.T., M.Eng
- Anggota 2** : Ahmad Faizal, S.T., M.T



© Hak cipta milik UIN Suska Riau

Hak Cipta Dilindungi Undang-Undang

1. Dilarang mengutip sebagian atau seluruh karya tulis ini tanpa mencantumkan dan menyebutkan sumber:
 - a. Pengutipan hanya untuk kepentingan pendidikan, penelitian, penulisan karya ilmiah, penyusunan laporan, penulisan kritik atau tinjauan suatu masalah.
 - b. Pengutipan tidak merugikan kepentingan yang wajar UIN Suska Riau.
2. Dilarang mengumumkan dan memperbanyak sebagian atau seluruh karya tulis ini dalam bentuk apapun tanpa izin UIN Suska Riau.

State Islamic University of Sultan Syarif Kasim Riau

UIN SUSKA RIAU



LEMBAR PERSETUJUAN

ANALISIS KEANDALAN INSTRUMENTASI TURBIN UAP DENGAN METODE FAILURE MODE AND EFFECT ANALYSIS (FMEA) DI PT. PLN NUSANTARA POWER UP TENAYAN

oleh:

ANZHAR DEVALMA

12050510346

Telah diperiksa dan disetujui sebagai laporan Tugas Akhir Program Studi Teknik Elektro
di Pekanbaru, pada tanggal 27 Desember 2024

Ketua Prodi Teknik Elektro

Dr. Zulfatri Aini, S.T., M.T
NIP. 19721021 200604 2 001

Pembimbing

Jufrizel, S.T., M.T
NIP. 19740719 200604 1 001

© Hak cipta ini milik UIN Suska Riau
State Islamic University of Sultan Syarif Kasim Riau

Hak Cipta Diindungi Undang-Undang

1. Dilarang mengutip sebagian atau seluruh karya tulis ini tanpa mencantumkan dan menyebutkan sumber:
 - a. Pengutipan hanya untuk kepentingan pendidikan, penelitian, penulisan karya ilmiah, penyusunan laporan, penulisan kritik atau tinjauan suatu masalah.
 - b. Pengutipan tidak merugikan kepentingan yang wajar UIN Suska Riau.
2. Dilarang mengumumkan dan memperbanyak sebagian atau seluruh karya tulis ini dalam bentuk apapun tanpa izin UIN Suska Riau.

UIN SUSKA RIAU



© Hak cipta dimiliki UIN Suska Riau
 State Islamic University of Sultan Syarif Kasim Riau

SURAT PERNYATAAN

yang bertanda tangan dibawah ini:

: Anzhar Devalma
 : 12050510346
 : Simpang Gaung, 06 Februari 2002
 : Sains dan Teknologi
 : Teknik Elektro
 :

Analisis Keandalan Instrumentasi Turbin Uap Dengan Menggunakan Metode Failure Mode and Effect Analysis (FMEA) di PT PLN Nusantara Power UP Tenayan

Menyatakan dengan sebenar-benarnya bahwa:

1. Penulis Artikel dengan judul sebagaimana tersebut di atas adalah hasil pemikiran dan penelitian saya sendiri.
2. Semua kutipan pada Karya Tulis say aini sudah disebutkan sumbernya.
3. Oleh karena itu Artikel saya sini, saya nyatakan bebas dari plagiat.
4. Apabila dikemudian hari terbukti terdapat plagiat dalam penelitian Artikel saya tersebut, maka saya bersedia menerima sanksi sesuai peraturan perundang-undangan.

Demikian surat pernyataan ini saya buat dengan penuh kesadaran dan tanpa paksaan dari pihak manapun juga.

Pekanbaru, 9 Januari 2025
 Yang membuat pernyataan



Anzhar Devalma
 NIM. 12050510346

Hak Cipta Diindungi Undang-undang
 1. Dilarang mengutip sebagian atau seluruh karya tulis ini tanpa mencantumkan dan menyebutkan sumber.
 a. Pengutipan hanya untuk kepentingan pendidikan, penelitian, penulisan karya ilmiah, penyusunan laporan, penulisan kritik atau tinjauan suatu masalah.
 b. Pengutipan tidak merugikan kepentingan yang wajar UIN Suska Riau.
 2. Dilarang mengumumkan dan memperbanyak sebagian atau seluruh karya tulis ini dalam bentuk apapun tanpa izin UIN Suska Riau.

Reliability Analysis of Steam Turbine Instrumentation Using the Failure Mode and Effect Analysis (FMEA) Method at PT. PLN Nusantara Power UP Tenayan

Anzhar Devalma¹, Jufrizel², Aulia Ulah³, Ahmad Faizal⁴

^{1,2,3,4} Sultan Syarif Kasim Riau State Islamic University, Jl. HR. Soebrantas No. Km 15, Riau, 28923

ARTICLE INFO

Article history:

Received : 23/07/2024

Revised : 29/07/2024

Accepted : 01/10/2024

Keywords:

Failure Mode and Effect Analysis;
Reliability Steam Turbine

ABSTRACT

PT. PLN Nusantara Power Unit Generation Tenayan is a company operating in the Steam Power Plant sector in Pekanbaru, Indonesia. One of the main components of a steam power plant (PLTU) is a steam turbine. A steam turbine is a machine that functions to convert kinetic energy into electrical current. Operational failures are often caused by less than optimal instrumentation in the steam turbine. This research uses the failure mode and effect analysis (FMEA) method with the aim of identifying the type of failure, the cause of the failure, the effect of the failure, and determining the RPN value. The analysis results from this research show that the turbine instrumentation components still meet performance standards because the risk priority number (RPN) value is less than 200. The conclusion from this research is that errors in steam turbine instrumentation are inaccurate sensor readings, switches cannot deactivate the equipment, and readings control room does not match local readings, the instrumentation component with the highest risk priority number (RPN) is the solenoid valve with a value of 140, and the instrumentation component with the lowest risk priority number (RPN) is the pressure indicator with a value of 30. The component given top priority in action The recommendation is for the solenoid valve component, namely to carry out maintenance every 6 months and add an overspeed protection system.



This work is licensed under a [Creative Commons Attribution 4.0 International License](https://creativecommons.org/licenses/by/4.0/)

Corresponding Author :

jufrizel

Sultan Syarif Kasim Riau State Islamic University, 28129, Pekanbaru

Email: jufrizel@uin-suska.ac.id

1. INTRODUCTION

The type of secondary energy most commonly used by humans is electrical energy, electrical energy is produced from the conversion of primary energy sources such as water, wind, petroleum, coal, sunlight, gas, and others [1]. Electrical energy can be easily converted into various forms of energy and easily transferred from one form to another [2]. Therefore, electrical energy is mandatory for the production process to take place, both for large and small industries [3].

The need for electrical energy in Indonesia is increasing every year, one of which is Riau province. From data from the Central Statistics Agency, Riau province has an area of 87,023.66 km² with a population in 2016 of 6,500,971 people, in 2017 of 6,657,911 people, in 2018 of 6,814,909 people, and in 2019 of 6,971,745 soul. This increasing population growth causes a very large need for

2. Dilarang mengemukakan dan memperbanyak sebagian atau seluruh karya tulis ini dalam bentuk apapun tanpa izin UIN Suska Riau.

Electrical energy [4]. Therefore, PT. PLN Nusantara Power UP Tenayan built PLTU Tenayan Raya to overcome the electrical energy crisis that occurred in Riau (Fadilla et al., 2023). Steam power plants (PLTU) are plants that rely on kinetic energy from steam to produce electrical energy [1]. PLTU Tenayan has a capacity of 2×110 Mega Watt [5].

In carrying out the process, the Tenayan Steam Power Plant (PLTU) involves a series of complex stages supported by various kinds of equipment and machines. However, the production process of Steam Power Plants (PLTU) is often hampered. This is caused by a failure in the instrumentation components on the machine used, which results in disruption of the electrical energy production process. One machine that often fails is the steam turbine.

One of the main components in a steam power plant is a turbine [6]. A steam turbine is a machine that functions to convert kinetic energy into electrical current [7]. A simple steam turbine has a rotating part called a rotor. When fluid flows into the turbine, the blades rotate, producing the energy needed to move the rotor [8]. In a steam turbine there are several instrumentation components such as temperature indicators, vibration sensors, resistance temperature detection, pressure indicators, temperature indicator switches, solenoid valves, limit switches, pressure transmitters.

From the results of interviews and observations carried out directly with the instrumentation and control team leader at PT. PLN Nusantara Power UP Tenayan, it is known that failures that occur in steam turbine instrumentation components can cause damage to other components, and result in the performance of the steam turbine not being optimal. In order to ensure that the components in the steam turbine run well, it is necessary to prevent failure to identify potential causes of failure that will occur. One maintenance method that is able to identify failures is the Failure Mode and Effect Analysis (FMEA) method [9]. In the FMEA analysis process, there are three variables used to determine the problem, including severity, frequency and detection level [10].

In research [11] discussed the damage that occurred on the Al Pin 350 lathe machine, and succeeded in proving that the machine was still in the reliable category and was proven by calculating the risk priority number (RPN) value using the failure mode effect and analysis (FMEA) method, even though the machine there is damage with the highest RPN but it is still in the reliable category. Research [12] Analysis that was carried out using the Failure Mode and Effect Analysis (FMEA) method succeeded in obtaining important components in lubricant system failures that require high priority for maintenance activities in the lubrication system on ships.

In research conducted by [13] using the failure mode and effect analysis (FMEA) method, it succeeded in identifying the failure mode and the failure effects resulting from the failure, and was able to provide recommendations for actions that the company should take to reduce the effects of failure. It was discovered that failures had an RPN value. The highest is still in the low category, but the frequency of damage occurs frequently and cannot be ignored.

Another study [14] also discussed the reliability of thresher machine components using the FMEA method. The researchers succeeded in getting availability values for machine components and knowing which equipment required special maintenance. In another study [15] also analyzed the RPN value of double screw compressor machine components using the FMEA method, and it can be seen that the FMEA method is able to identify failures and analyze the RPN value on double screw compressor machines by getting the highest RPN value and getting the lowest availability of components. double screw compressor machine.

Based on several related studies above, the FMEA method is able to identify failures and reduce the occurrence of failures by providing suggestions for preventive or maintenance actions for machine components that have the highest RPN values. The author is interested in conducting research which aims to determine the RPN value and analyze failures that occur in steam turbine instrumentation at PT. PLN Nusantara Power UP Tenayan using the failure mode and effect analysis (FMEA) method.

2. RESEARCH METHOD

2.1. Research Design

This research is illustrated in a flow diagram which aims to explain the steps in conducting research, the research diagram is shown in Figure 1 Research flowchart.

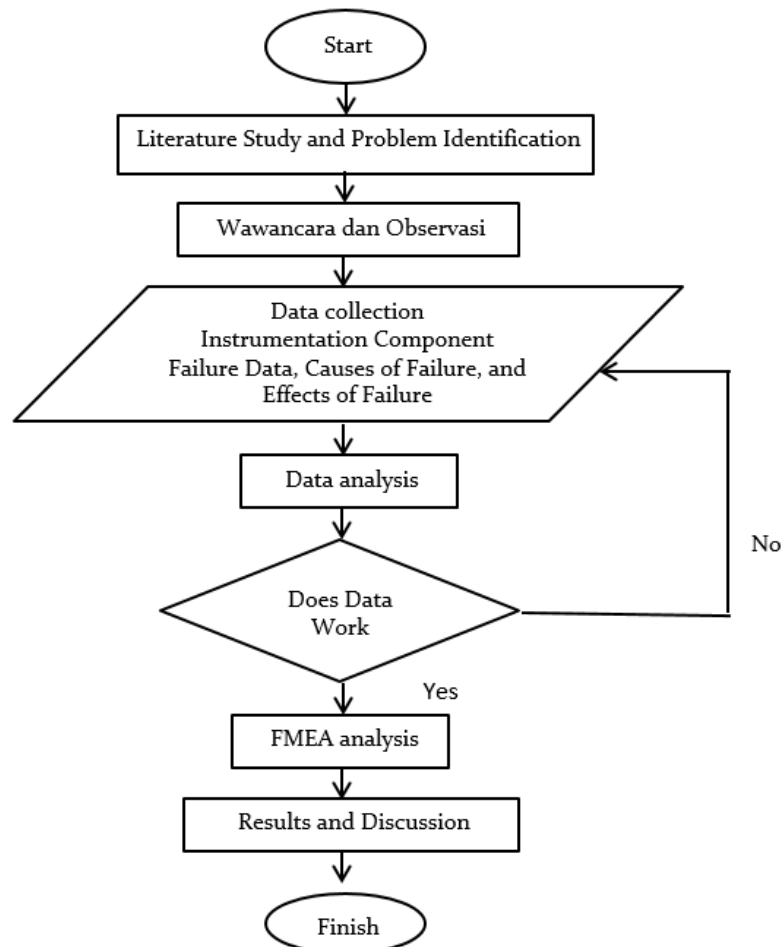


Figure 1. Research Flowchart

© Hak cipta milik UIN Suska Riau

Hak Cipta Dilindungi Undang-Undang

1. Dilarang mengutip sebagian atau seluruh karya tulis ini tanpa mencantumkan dan menyebutkan sumber.
2. Dilarang mengutip sebagian atau seluruh karya tulis ini dalam bentuk apapun tanpa izin UIN Suska Riau.

2.2. FMEA analysis

Failure Mode and Effect Analysis (FMEA) is a method that can be used to identify and eliminate defects or failures in products during the production process. FMEA can be used to define the consequences of failure at each stage, then create priorities related to prevention and improvement efforts, with the aim that the products produced in the next production process can be in accordance with customer wishes. In the FMEA analysis process, there are three variables used to determine the problem, including severity, frequency and detection level [10].

In the FMEA method, the risk priority number (RPN) is calculated to determine the highest level of failure risk, by connecting three criteria, namely severity, occurrence and detection. The higher the RPN value, the lower the level of reliability of a system's components [15]. To determine the level of risk of failure, it can be written using the following equation:

$$RPN = Sev \times Occ \times Det \quad (1)$$

Description :

- RPN = risk priority number
- Sev = severity (level of damage)
- Occ = occurrence (frequency)
- Det = detection (detection level)

3. RESULTS AND DISCUSSION

3.1. Failure Mode Effect And Analysis

Failure mode effect and analysis is used to see the steam turbine instrumentation components that most often fail during the electricity production process. FMEA worksheet table which functions to

Hak Cipta Dilindungi Undang-Undang

1. Dilarang mengutip sebagian atau seluruh karya tulis ini tanpa mencantumkan dan menyebutkan sumber:

a. Pengutipan hanya untuk kepentingan pendidikan, penelitian, penulisan karya ilmiah, penyusunan laporan, penulisan kritik atau tinjauan suatu masalah.

b. Pengutipan tidak merugikan kepentingan yang wajar UIN Suska Riau.

2. Dilarang mengumumkan dan memperbanyak sebagian atau seluruh karya tulis ini dalam bentuk apapun tanpa izin UIN Suska Riau.

Temperature indicator

This instrumentation component functions as a temperature measurement in the steam turbine. The failure that occurred was an error in the temperature sensor reading. So it can result in high temperatures and have an effect on non-optimal steam turbine performance. This can be seen from the inaccurate indication of the temperature indicator. The instrument and control team leader gave a score of 4 for severity, gave a score of 5 for frequency of occurrence, and gave a score of 3 for detection level. So the RPN value is 60.

Temperature indicator switch

This instrumentation component functions as a device that automatically activates or deactivates based on the temperature detected in the steam turbine. The failure that occurs in this component is that the switch fails to turn off the equipment when overheating occurs due to the lifetime of the temperature sensor, resulting in the unit tripping. This can be seen from the device remaining active at increasing temperatures. The instrument and control team leader gave a score of 8 for severity, gave a score of 2 for frequency of occurrence, and gave a score of 7 for detection level. So the RPN value is 112.

Vibration sensor

This instrumentation component functions as a vibration measurement in the steam turbine. Failure occurs because the sensor readings are inaccurate, which can result in excessive vibration and the effect of the unit shutting down. This is caused by corrosion of the cable or connector and can be seen from the CCR (central control room) being unreadable. The instrument and control team leader gave a score of 8 for severity, gave a score of 4 for frequency of occurrence, and gave a score of 3 for detection level. So the RPN value is 128.

Resistance temperature detector

This instrumentation component functions to detect changes and monitor temperature changes and can be monitored from the DCS (distributed control system) room. Failure is overheating or excessive temperature in the turbine which occurs because the readings on the DCS do not match the local readings. This can result in damage to the related equipment and it not being able to work properly, which is caused by improper cable calibration and can be seen from the readings in the control room. The instrument and control team leader gave a score of 5 for severity, gave a score of 5 for frequency of occurrence, and gave a score of 4 for detection level. So the RPN value is 100.

Solenoid valve

This instrumentation component functions to control fluid flow automatically. The failure that occurs is the inability to control the fluid flow due to damaged or disconnected cables or connections, causing the fluid entering the turbine to be uncontrolled, in other words, it can cause overspeed. This can be seen from the computer in the control room where the rotation of the turbine increases due to uncontrolled fluid flow entering the turbine. The instrument and control team leader gave a score of 7 for severity, gave a score of 5 for frequency of occurrence, and gave a score of 4 for level of detection. So the RPN value is 140.

7. Pressure indicator

This instrumentation component functions as a pressure gauge in the steam turbine. The failure that occurs is that the pressure reading on the pressure indicator is inaccurate due to the age of the sensor, this can cause damage to other devices because the pressure exceeds the safe limit. This can be seen from the indication on the pressure indicator which is not actual. The instrument and control team leader gave a score of 5 for severity, gave a score of 2 for frequency of occurrence, and gave a score of 3 for detection level. So the RPN value is 30.

From the analysis carried out on the steam turbine instrumentation components at PT. PLN Nusantara Power Up Tenayan using the failure mode and effect analysis (FMEA) method has produced a risk priority number (RPN) value for the steam turbine instrumentation, and it can be seen from the FMEA worksheet table above, it can be summarized from highest to lowest as follows in table 2 below. The results of identifying the RPN value on steam turbine instrumentation show that all components of the steam turbine instrumentation have an RPN value below 200. Based on the

Hak Cipta Dilindungi Undang-Undang
 1. Dilarang mengutip sebagian atau seluruh karya tulis ini tanpa mencantumkan dan menyebutkan sumber. Sanksi pidana dan administratif dikenakan bagi siapa saja yang melanggar ketentuan ini.
 2. Dilarang mengutip sebagian atau seluruh karya tulis ini dalam bentuk apapun tanpa izin UIN Suska Riau.

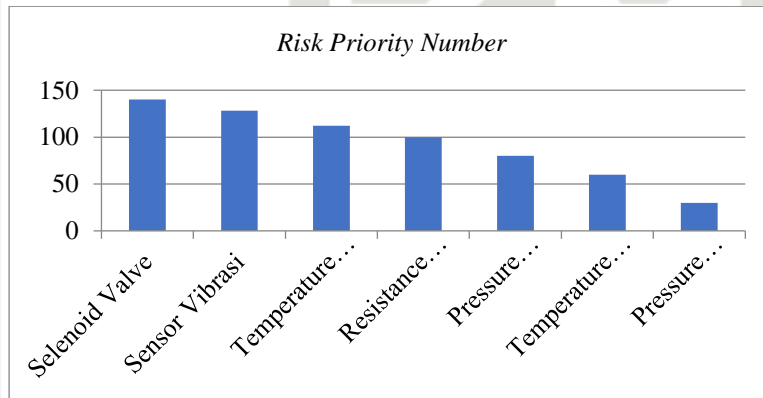
© Hak Cipta milik UIN Suska Riau
 State Islamic University of Sultan Syarif Qasim Riau

an RPN value that has a value range of less than 200 means that the risk of this condition is considered low, and the instrumentation can be categorized as reliable [16] .

Table 2. Risk Priority Number Steam Turbine

NO	Component	Risk Priority Number (RPN)
1	Pressure transmitters	80
2	Temperature indicator	60
3	Temperature Indicator Switch	112
4	Vibration sensor	128
5	Resistance temperature detector	100
6	Solenoid valve	140
7	Pressure Indicator	30

Based on the results of reliability analysis carried out using the qualitative FMEA method. So it is found that the instrumentation components have risk priority number (RPN) values from highest to lowest, namely solenoid valve 140, vibration sensor 128, temperature indicator switch 112, resistance temperature detector 100, pressure transmitter 80, temperature indicator 60, and pressure indicator 30. The following is a form of Pareto diagram that makes it easier for readers to briefly identify the components that have the highest RPN values and the components that have the lowest RPN values.



Figures 2. Steam Turbine Pareto Diagram

From the Pareto diagram above, it shows that the largest RPN value lies in the solenoid valve component which is useful for controlling fluid flow automatically. This component is very influential in the continuity of electricity production with an RPN value of 140, which means that this component often experiences failures such as failure to control fluid flow to the turbine. Meanwhile, the pressure indicator component is an instrumentation tool that is useful for measuring pressure in steam turbines, which is the component that experiences the least damage with an RPN of 30. All of these components depend on other components, because if one component is damaged then the system cannot run or can be paid to trip until the damaged component can return to normal operation.

4. CONCLUSION

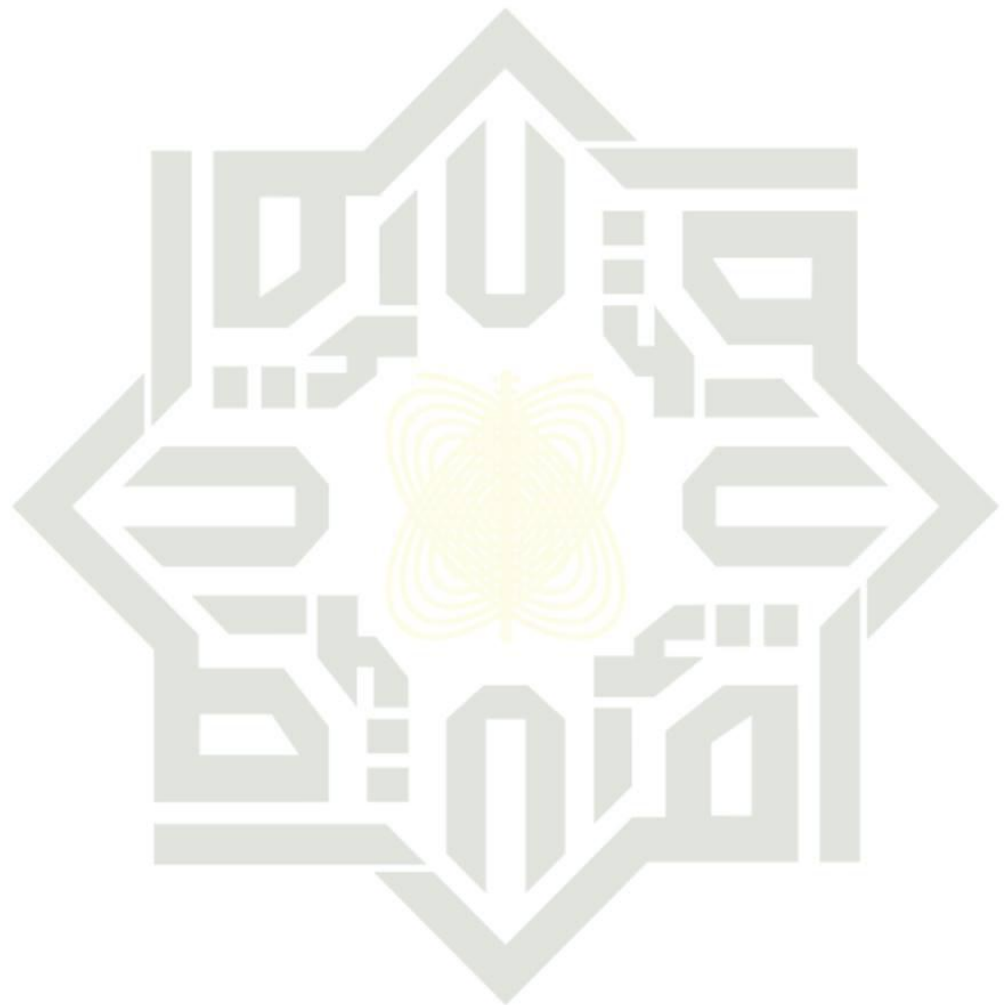
Based on the results of the reliability analysis of the instrumentation system on the PT steam turbine. PLN Nusantara Power UP Tenayan Pekanbaru, using the failure mode and effect analysis (FMEA) method, it can be concluded that.

1. After analyzing the instrumentation system on the steam turbine using the failure mode and effect analysis (FMEA) method, it can be seen that the instrumentation component on the steam turbine that has the highest RPN value is the solenoid valve with a value of 140, even though the solenoid valve component has the highest value but still in the reliable category.
2. The results of identifying the type of failure that occurred in the steam turbine were that the readings from the sensors were inaccurate, the switch failed to turn off the equipment, and the readings in the control room did not match local conditions.

- Reliability of Thresher Machine Components Using the Fmea Method at Pt . 9, no. 2, pp. 74–112, 2021. doi: 10.35447/jitekh.v9i2.427.
- M. Rinoza and F. Ahmad Kurniawan, "Rpn (Risk Priority Number) Analysis of the Reliability of Double Screw Compressor Machine Components Using the Fmea Method at the Pt Cement Factory. Xyz," *Print) Bul. Main Tech.* , vol. 17, no. 1, pp. 1410–4520, 2021.
- J. Wibowo, TS Hidayatullah, and A. Nalhadi, "Maintenance Analysis on Lathes Using the Reliability-Centered Maintenance (RCM) Approach," *J. Rekayasa Ind.* , vol. 3, no. 2, pp. 110–120, 2023. doi: 10.37631/jri.v3i2.485.
- Hak Cipta Dilindungi Undang-Undang**
1. Dilarang mengutip sebagian atau seluruh karya tulis ini tanpa mencantumkan dan menyebutkan sumber:
a. Pengutipan hanya untuk kepentingan pendidikan, penelitian, penulisan karya ilmiah, penyusunan laporan, penulisan kritik atau tinjauan suatu masalah.
b. Pengutipan tidak merugikan kepentingan yang wajar UIN Suska Riau.
2. Dilarang mengumumkan dan memperbanyak sebagian atau seluruh karya tulis ini dalam bentuk apapun tanpa izin UIN Suska Riau.

© Hak Cipta Milik UIN Suska Riau

State Islamic University of Sultan Syarif Kasim Riau



UIN SUSKA RIAU

18 September 2024

Letter of Acceptance

Dear Author(s)

Based on the results of the reviewer evaluation and the coordination meeting of the editorial board of the Jurnal Ecotipe, your article entitled:

Reliability Analysis of Steam Turbine Instrumentation Using the Failure Mode and Effect Analysis (FMEA) Method at PT. PLN Nusantara Power UP Tenayan

Written by

: Anzhar Devalma, Jufrizal*, Aulia Ulah, Ahmad FAizal

Affiliation

: * Department of Mechanical Engineering, Universitas Tadulako

Corresponden email

: jufrizel@uin-suska.ac.id

Your article has been accepted and will be processed for publication in the **Jurnal Ecotipe** (*Electronic, Control, Telecommunication, Information, and Power Engineering*) **Volume 11 Issue 2, October 2024**. Articles with the above title may not be published in other journals. If in the future, an article with the same title above is known to have been published and plagiarism was found in another journal, then Jurnal Ecotipe is not responsible and is entirely the responsibility of the author. Your article will be published online no later than November 2024.

Thank you for choosing and submitting your article to the Jurnal Ecotipe. We look forward to submitting your other articles in our journal.

Kindly regards,



Ruci Kurniawan
Editor-in-Chief

UIN SUSKA RIAU