

Hak Cipta Dilindungi Undang-Undang

1. Dilarang mengutip sebagian atau seluruh karya tulis ini tanpa mencantumkan dan menyebutkan sumber:
 - a. Pengutipan hanya untuk kepentingan pendidikan, penelitian, penulisan karya ilmiah, penyusunan laporan, penulisan kritik atau tinjauan suatu masalah.
 - b. Pengutipan tidak merugikan kepentingan yang wajar UIN Suska Riau.
2. Dilarang mengumumkan dan memperbanyak sebagian atau seluruh karya tulis ini dalam bentuk apapun tanpa izin UIN Suska Riau.



THE APPLIED OF FUNCTIONAL DATA ANALYSIS TO COMPARISON 100 TIMES SIMULATED MONTHLY RAINFALL USING SOME TWO PARAMETERS DISTRIBUTION

TUGAS AKHIR

Diajukan Sebagai Salah Satu Syarat untuk Memperoleh Gelar Sarjana Teknik
pada Program Studi Matematika Fakultas Sains Dan Teknologi



Oleh :

MASRO

NIM. 11750425238

PROGRAM STUDI MATEMATIKA
FAKULTAS SAINS DAN TEKNOLOGI
UNIVERSITAS ISLAM NEGERI SULTAN SYARIF KASIM
RIAU PEKANBARU

2023



Hak Cipta Dilindungi Undang-Undang

1. Dilarang mengutip sebagian atau seluruh karya tulis ini tanpa mencantumkan dan menyebutkan sumber:
 - a. Pengutipan hanya untuk kepentingan pendidikan, penelitian, penulisan karya ilmiah, penyusunan laporan, penulisan kritik atau tinjauan suatu masalah.
 - b. Pengutipan tidak merugikan kepentingan yang wajar UIN Suska Riau.
2. Dilarang mengemukakan dan memperbanyak sebagian atau seluruh karya tulis ini dalam bentuk apapun tanpa izin UIN Suska Riau.

© Hak cipta milik UIN Suska Riau

State Islamic University of Sultan Syarif Kasim Riau

Lampiran Surat :
 Nomor : Nomor 25/2021
 Tanggal : 10 September 2021

SURAT PERNYATAAN

Saya yang bertandatangan di bawah ini:

Nama : Masroh
 NIM : 11750425238
 Tempat/Tgl. Lahir : Rimba Melintang, 27 Mei 1999
 Fakultas/Pascasarjana : Sains dan Teknologi
 Prodi : Matematika
 Judul Disertasi/Thesis/Skripsi/Karya Ilmiah lainnya*:

The Applied of Functional Data Analysis to Comparison
100 Times Simulated Monthly Rainfall Using Some Two
Parameters Distribution

Menyatakan dengan sebenar-benarnya bahwa :

1. Penulisan Disertasi/Thesis/Skripsi/Karya Ilmiah lainnya* dengan judul sebagaimana tersebut di atas adalah hasil pemikiran dan penelitian saya sendiri.
2. Semua kutipan pada karya tulis saya ini sudah disebutkan sumbernya.
3. Oleh karena itu Disertasi/Thesis/Skripsi/Karya Ilmiah lainnya* saya ini, saya nyatakan bebas dari plagiat.
4. Apa bila dikemudian hari terbukti terdapat plagiat dalam penulisan Disertasi/Thesis/Skripsi/(Karya Ilmiah lainnya)* saya tersebut, maka saya bersedia menerima sanksi sesuai peraturan perundang-undangan.

Demikianlah Surat Pernyataan ini saya buat dengan penuh kesadaran dan tanpa paksaan dari pihak manapun juga.

UIN SUSKA RIAU

Pekanbaru, 13 Juli 2023.
 Yang membuat pernyataan


 METERAI TEMPEL
 850BAKX552701207
 Masroh
 NIM : 11750425238

*pilih salah satu sesuai jenis karya tulis



LEMBAR PERSETUJUAN

PENERAPAN ANALISIS DATA FUNGSIONAL UNTUK PERBANDINGAN SIMULASI 100 KALI CURAH HUJAN BULANAN MENGUNAKAN DUA DISTRIBUSI PARAMETER

TUGAS AKHIR

oleh:

Masroh
11750425238

Telah diperiksa dan disetujui sebagai laporan tugas akhir
di Pekanbaru, pada tanggal 27 Juni 2023

Ketua Program Studi

Wartono, M.Sc.
NIP. 19730818 200604 1 003

Pembimbing

Dr. Rado Yendra, M.Si
NIP.19751115 200801 1 010

© Hak cipta dimiliki UIN Suska Riau

State Islamic University of Sultan Syarif Kasim Riau

Hak Cipta Dilindungi Undang-Undang

1. Dilarang mengutip sebagian atau seluruh karya tulis ini tanpa mencantumkan dan menyebutkan sumber:
 - a. Pengutipan hanya untuk kepentingan pendidikan, penelitian, penulisan karya ilmiah, penyusunan laporan, penulisan kritik atau tinjauan suatu masalah.
 - b. Pengutipan tidak merugikan kepentingan yang wajar UIN Suska Riau.
2. Dilarang mengumumkan dan memperbanyak sebagian atau seluruh karya tulis ini dalam bentuk apapun tanpa izin UIN Suska Riau.



LEMBAR PENGESAHAN

PENERAPAN ANALISIS DATA FUNGSIONAL UNTUK PERBANDINGAN SIMULASI 100 KALI CURAH HUJAN BULANAN MENGUNAKAN DUA DISTRIBUSI PARAMETER

TUGAS AKHIR

oleh:

Masroh
11750425238

Telah dipertahankan di depan sidang dewan penguji sebagai salah satu syarat untuk memperoleh gelar Sarjana Sains Fakultas Sains dan Teknologi Universitas Islam Negeri Sultan Syarif Kasim Riau di Pekanbaru, pada tanggal 27 Juni 2023

Pekanbaru, 27 Juni 2023
Mengesahkan

Ketua Program Studi

Wartono, M.Sc.
NIP. 19730818 200604 1 003

Dekan

Dr. Hartono, M.Pd.
NIP. 19640301 199203 1 003

DEWAN PENGUJI

Ketua : Nilwan Andiraja, S.Pd., M.Sc.

Sekretaris : Dr. Rado Yendra, M.Sc

Anggota I : Ari Pani Desvina, M.Sc

Anggota II : M. Marizal, M.Sc.

© Hak cipta milik UIN Suska Riau

State Islamic University of Sultan Syarif Kasim Riau

Hak Cipta Dilindungi Undang-Undang

1. Dilarang mengutip sebagian atau seluruh karya tulis ini tanpa mencantumkan dan menyebutkan sumber:
 - a. Pengutipan hanya untuk kepentingan pendidikan, penelitian, penulisan karya ilmiah, penyusunan laporan, penulisan kritik atau tinjauan suatu masalah.
 - b. Pengutipan tidak merugikan kepentingan yang wajar UIN Suska Riau.
2. Dilarang mengumumkan dan memperbanyak sebagian atau seluruh karya tulis ini dalam bentuk apapun tanpa izin UIN Suska Riau.



The Applied of Functional Data Analysis to Comparison 100 Times Simulated Monthly Rainfall Using Some two Parameters Distribution

Masroh¹, Rado Yendra², Ari Pani Desvina³, Muhammad Marizal⁴

^{1,2,3,4}Department of Mathematics, Faculty of Science and Technology, Universitas Islam Negeri Sultan Syarif Kasim Riau

ARTICLE INFO

Published Online:

May 2023

Penelitian, penulisan karya ilmiah, penyusunan laporan, penulisan kritik atau tinjauan yang berkaitan dengan penelitian, UIN Suska Riau.

Corresponding Author:

Muhammad Marizal

KEYWORDS: Probability Models, Simulation Monthly Rainfall, Functional Data Analysis, Gamma Distribution, Weibull Distribution, Log Normal Distribution

INTRODUCTION

The simulation or generation of synthetic monthly rainfall data is important as it enables the generation of synthetic rainfall that has similar characteristics to the observed data. Thus, it will assist in cases where data is unavailable. Monthly rainfall data is generally needed in the simulation of water resources systems, and in the estimation of water yield from large catchments. Monthly streamflow data generation models are usually applied to generate monthly rainfall data. The probability model is very useful in simulating or generating synthetic monthly rainfall. In particular, the gamma distribution has been used many times to model rainfall totals on wet days[1]. Valuable general reviews on

ABSTRACT

Three probability models of monthly rainfall such as Gamma, Weibull and Log Normal distribution are evaluated in terms of their ability to reproduce the mean statistics derived from 100 times simulation of monthly rainfall in the Pekanbaru City, Indonesia. One of the important studies is to investigate and understand the simulate mean monthly rainfall patterns that occur throughout the year. To identify the pattern, it requires a rainfall curve to represent monthly observation of rainfall received during the year. Functional data analysis (FDA) methods are capable to convert discrete data into a function that can represent the rainfall curve and as a result, try to describe the hidden patterns of the rainfall. This study is focused on investigating 100 curve average monthly rainfall simulated by three different quantile functions using the FDA. The mean and standard deviation of FDA for average monthly precipitation are obtained. Through these two statistics a the confidence interval curves of the mean curve are presented represent 95% pointwise confidence intervals. In this study, most of the monthly average rainfall from the actual data were around the FDA mean and the monthly average rainfall was within the FDA confidence interval. In this study, 100 times monthly rainfall simulations using the quantile function of the gamma and log normal distributions found that the mean FDA can capture most of the mean monthly rainfall from historical data, and within the FDA interval. The contradictory results shown by the monthly rainfall simulations using the Weibull distribution, most of the monthly average rainfall historical data cannot be captured by the FDA mean and are outside the FDA confidence interval. Based on the Mean Absolute Error (MAE) value of the average monthly rainfall of historical data and the monthly average of the FDA, it can be concluded that the gamma distribution can produce simulated rain better than the log normal distribution.

weather generators are published by [2] and [3]. More elaborate models have been proposed for the distribution of precipitation amounts given the occurrence of a wet day. Stern and Coe (1984)[4] used the two-parameter gamma distribution to describe the precipitation amount on wet days. An excellent review of stochastic weather models has been presented [5]. Although a large number of precipitation models have been developed, many practical applications require that weather generators produce other meteorological variables in addition to precipitation. Synthetic rain data generation for various time periods such as daily, monthly and yearly is well done in Australia, the quantile function of the two-parameter gamma probability density function plays



a very important role in this purpose [6]. Several algorithms have been developed for the purpose of generating daily, monthly and yearly synthetic rainfall. Rainfall generation algorithm (Gen) has been generated to produce annual synthetic rainfall [7] and new synthetic daily rainfall generated together [8] with a similar model to produce monthly synthetic total. Using the FDA method can transform the simulate monthly rainfall data into a curve or function therefore, the FDA method is considered to be one of the most advanced techniques using all available data as input [9,10,11]. Ramsay and Silverman [12] gave a very good explanation on several functional methods such as principal component analysis, linear model, canonical correlation and discriminant analysis. It has been used in so many applications, such as in environmental problem (Gao and Nelder, [13]) and economy (Laukaitis and Rackauskas, [14]). FDA can also be used to detect the outlier in water quality (Luniz et al., [15]) and Martinez et al. [16] on outlier in air quality. Burfield et al. [17] used FDA in characterizing the chemical data and conclude that it is a powerful technique to detect the function minima and maxima even though they agree that the computational part was more complex compared to classical multivariate analysis. Sierra et al.[18] and Reizbellido et al. [19] shared the same thought that functional data analysis is a promising and valuable tool in their research. There are two main focuses in this research, the first in this study focuses on using several two-parameter probability models such as Weibull, Gamma and Log Normal in simulating monthly rainfall based on 100 time simulation using the quantile function of probability models. Parameter estimation using the maximum likelihood method. The second in this study is focused on investigating 100 curve average monthly rainfall simulated by three different quantile functions to choose the best distribution using the FDA. The mean and standard deviation of FDA for average monthly precipitation are obtained. Through these two statistics a the confidence interval curves of the mean curve are presented represent 95% pointwise confidence intervals.

II. DATA

The analysis on the daily rainfall data for Pekanbaru meteorological stations, provided by the Meteorological, Climatological, and Geophysical Agency (BMKG) of Pekanbaru, Indonesia, is developed in this study. We have available records of rainfall data starting earlier than 1 January 1990. Data series continue until 31 December 2008, resulting in 6940 daily observations corresponding to 19 years. Note that in order to have clear visualisations of our analysis, in the following sections are shown just data source mean monthly precipitation over Pekanbaru city, Indonesia.

III. METHODS

A. Probability Density Function (pdf) and Cumulative Distribution Function (cdf)

The primary tools to describe the monthly rainfall characteristics are probability density functions. Three two parameters probability density functions such as Weibull, Gamma and Log Normal will be used in this research. The pdf and cdf for each distribution that we consider are as given in Table 2, where x denote the observed values of the random variable representing the event of interest.

Table I Pdf and Cdf distributions model

	Distribution	pdf ($f(y)$) dan cdf ($F(y)$)
1	Weibull ($x;\eta,\kappa$)	$f(x) = \frac{\eta}{\kappa} \left(\frac{x}{\kappa}\right)^{\eta-1} e^{-\left(\frac{x}{\kappa}\right)^\eta}, x > 0, \eta, \kappa > 0$ $F(x) = 1 - e^{-\left(\frac{x}{\kappa}\right)^\eta}$
2	Gamma ($x;\alpha,\beta$)	$f(x) = \frac{1}{\beta^\alpha \Gamma(\alpha)} x^{\alpha-1} e^{-\frac{x}{\beta}}, x > 0, \alpha, \beta > 0$ $F(x) = \frac{1}{\beta^\alpha \Gamma(\alpha)} \int_0^x x^{\alpha-1} e^{-x/\beta} dx$
3	Log Normal ($x;\mu,\sigma$)	$f(x) = \frac{1}{\sqrt{2\pi\sigma x}} e^{-\frac{(\log x - \mu)^2}{2\sigma^2}}, x > 0, \mu, \sigma > 0$ $F(x) = \Phi\left(\frac{\log x - \mu}{\sigma}\right)$ <p>where Φ is the cumulative distribution function of the standard normal distribution (i.e., $N(0,1)$).</p>

Parameter estimation is the first thing that must be done in probability modeling. Like most studies that have been done, it can be concluded that the maximum likelihood (MLE) method is the most dominant used in this case. The MLE function for this model is implicit and complex and we will not discuss it in detail in this paper. The nonlinear equation generated by the maximum log likelihood function (ln L) requires a numerical method, namely Newton's raphson, to obtain a solution of the equation. But this method has been used in iteration systems to find the solution. Several initial values have been tested for this procedure. If the initial value used causes iteration of a certain value or the iterations converge to a value, then that value can be considered as the



IV. RESULT

The parameters of Gamma, Weibull and Log Normal distribution are estimated using the maximum likelihood. Table 3 presents the estimated parameters of all distribution. Based on the parameters, simulate rainfall will be generated every month for 100 times. The quantile function or inverse of the distribution function will be used for this purpose. Tasks, such as mean every month for 100 times simulate will be displayed using graphs. The mean of simulate monthly rainfall using gamma distribution represented using 100 black curve. This situation is explained from Figure 1 (a). The first step is to transform the discrete rainfall details into continuous functions or curves. Then, Fourier basis functions are performed. The choice of $k = 7$ can be justified to capture the rainfall variation within a month. the discrete rainfall data were converted into functional data objects by using Fourier bases. All of the obtained functional data simulate of the mean monthly rainfall are represented in 100 black curve, as shown in Figure 1 (b); this plot gives an idea that data are periodic, therefore, this periodicity can justify the use of the Fourier basis functions, in order to mainly reach the peaks and

Table 3. Estimated Parameters for Some Two Parameters Distributions

	Weibull		Gamma		Log Normal	
	η	κ	α	β	μ	σ
January	1.795	310.4	2.6	104.5	5.4	0.58
February	1.799	209.2	2.6	69.93	5.0	0.59
March	1.388	395.1	1.0	343.2	5.6	0.62
April	1.445	407.9	1.4	245.4	5.6	0.66
May	1.188	324.9	0.6	465.7	5.4	0.66
June	2.060	163.3	3.4	41.43	4.8	0.57
July	1.496	207.3	2.0	90.62	4.9	0.88
August	2.075	182.1	3.3	47.72	4.9	0.50
September	1.919	228.7	3.1	63.97	5.1	0.66
October	2.322	325.8	4.7	60.08	5.5	0.43
November	3.776	348.7	9.9	31.59	5.6	0.35
December	1.739	384.6	2.3	144.3	5.6	0.54

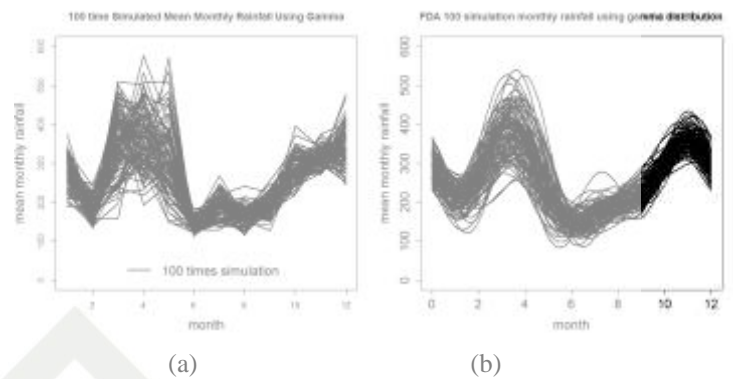


Figure 1 (a) 100 times simulation mean monthly rainfall using gamma distribution (b) 100 times functional data analysis

The mean of simulate monthly rainfall using weibull distribution represented using 100 green graph, as shown in Figure 2(c). Using $k = 7$, then Fourier basis functions are conducted. The choice of $k = 7$ can be justified to capture the rainfall variation within a month. the discrete rainfall data were converted into functional data objects by using Fourier bases. All of the obtained functional data simulate of the mean monthly rainfall are represented in 100 green curve, as shown in Figure. 2 (d). Figure 3(e) shows the 100 mean simulate month rainfall obtained by using log normal distribution as displayed by 100 yellow graphs. The mean of simulate monthly rainfall curves obtain by using functional data analysis for 100 times simulation as shown in Figure 3(f). The pattern for mean monthly simulate rainfall curves show the bimodal shaped with many fluctuations. This pattern is believed to be the result of Pekanbaru’s climate which is influenced by the two main monsoon seasons in Indonesia.

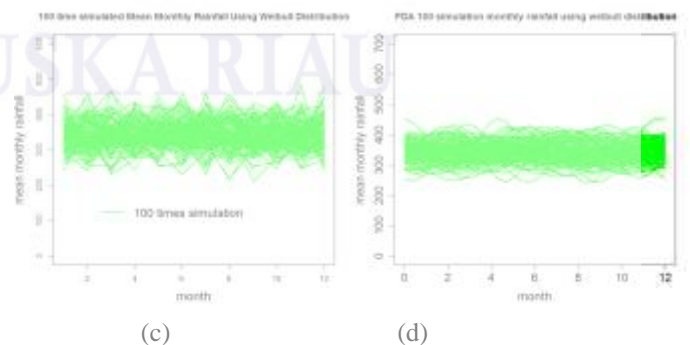


Figure 2 (c) 100 times simulation mean monthly rainfall using weibull distribution (d) 100 times functional data analysis



Hak cipta dimiliki UIN Suska Riau
Hak Cipta Dilindungi Undang-Undang
1. Dilarang mengutip sebagian atau seluruh karya tulis ini tanpa mengutip sumbernya
a. Pengutipan hanya untuk keperluan pendidikan, penelitian, dan penulisan karya ilmiah
b. Pengutipan tidak merugikan kepentingan yang wajar UIN Suska Riau
2. Dilarang mengumpukan dan menyebarluaskan karya tulis ini dalam bentuk apapun tanpa izin UIN Suska Riau

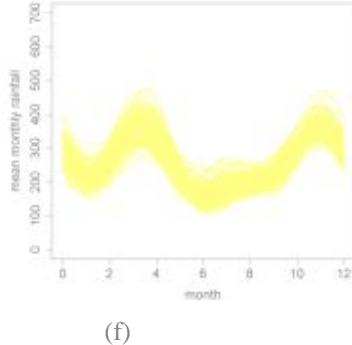


Figure 3 (e) 100 times simulation mean monthly rainfall using log normal distribution (f) 100 times functional data simulation using log normal distribution

The mean and standard deviation of functional data for mean simulate monthly rainfall using gamma distribution are presented in Figure 4(g), the solid curve is plotted in red is the mean function of average simulate monthly rainfall derived from the least square error and standard deviation curve is plotted in blue line. The confidence interval curves of the mean curve are presented in Figure 4(h), and the grey dashed lines represent 95% pointwise confidence intervals on the mean curve based on the least square error smoothing estimate of measurement plotted in Figure 1(b) and standard deviation function plotted in Figure 4(g). From Figure 4 (h) it can be seen that the average monthly rainfall of historical data (black dots) can mostly be captured by the mean of FDA curve, and all of these historical data are within the confidence intervals.

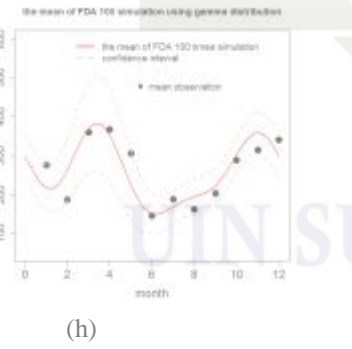
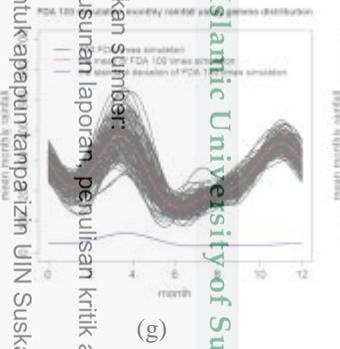


Figure 4 (g) Plot of 100 times FDA mean simulation using gamma distribution (black lines), the mean FDA (red lines) and standard deviation (blue lines) (h) Plot of confidence interval curves of the mean FDA and mean monthly rainfall observation (black points)

The mean and standard deviation of FDA for mean simulate monthly rainfall using weibull distribution are presented in Figure 5(i), the solid curve is plotted in red is the mean function of average simulate monthly rainfall derived from the least square error and standard deviation curve is plotted in blue line. The confidence interval curves of the mean curve are presented in Figure 5(j), and the grey dashed lines

represent 95% pointwise confidence intervals on the mean curve based on the least square error smoothing estimate of measurement plotted in Figure 2(d) and standard deviation function plotted in Figure 5(i). From Figure 5 (j) it can be seen that the average monthly rainfall of historical data (black dots) can not mostly be captured by the mean of FDA curve and mostly these historical data are outside the confidence intervals. Furthermore, the FDA will also be used to analyze the ability of the normal log distribution to produce monthly simulated rain. For this reason, a graph of the FDA average and FDA standard deviation for the average monthly rainfall of 100 simulations has been produced as shown in Figure 6(k). The confidence interval curves of the mean curve are presented in Figure 6(j), and the grey dashed lines represent 95% pointwise confidence intervals on the mean curve based on the least square error smoothing estimate of measurement plotted in Figure 3(b) and standard deviation function plotted in Figure 6(k). From the figure it can be seen that almost all of means monthly rainfall historical data (black dots) are within the confidence interval, although the average rainfall for months 2 and 5 is still outside the confidence interval.

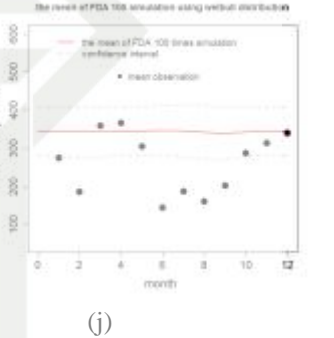
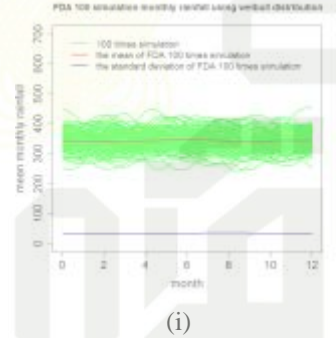


Figure 5 (i) Plot of 100 times FDA mean simulation using weibull distribution (black lines), the mean FDA (red lines) and standard deviation (blue lines) (j) Plot of confidence interval curves of the mean FDA and mean monthly rainfall observation (black points)

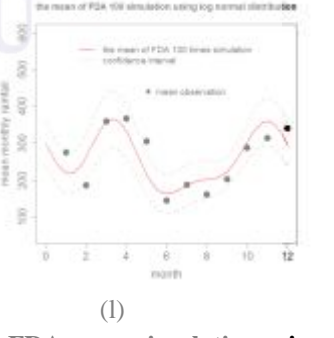
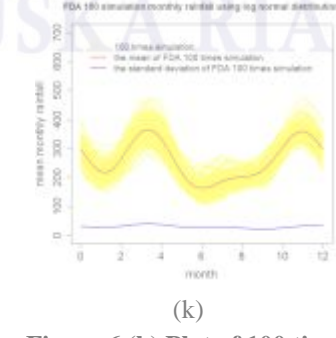


Figure 6 (k) Plot of 100 times FDA mean simulation using log normal distribution (black lines), the mean FDA (red lines) and standard deviation (blue lines) (l) Plot of confidence interval curves of the mean FDA and mean monthly rainfall observation (black points)



The Applied of Functional Data Analysis to Comparison 100 Times Simulated Monthly Rainfall Using Some two Parameters Distribution”

The Mean Absolute Error value obtained from the difference between mean monthly rainfall historical data and FDA is also displayed in ensuring the best distribution in the simulation. For this reason, Figure 7 is included for this purpose. From Figure 7 it can be seen that the gamma distribution is the best used to produce monthly rainfall simulations.

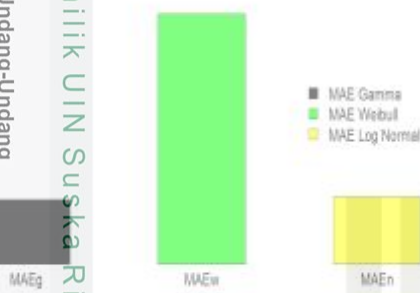


Figure 7. The comparison Mean Absolut Error of Mean Monthly Rainfall FDA Using Gamma, Weibull, and Log Normal Distribution

CONCLUSION

This paper has performed a different practice in analyzing using functional data analysis. A functional data analysis has been applied in 100 types of mean the simulate monthly rainfall data using gamma, weibull, and log normal distribution. This research analyzes and visualizes the average monthly rainfall throughout the last two decades for Pekanbaru City. FDA approaches with emphasis on smoothing and visualization were modified and applied for the rainfall measurements as an important step in a full FDA. Based on the results, the following main conclusions can be drawn from this work:

- The entire rainfall observations were treated by FDA techniques like function data shown by curves which represent the actual phenomena better and display many graphical displays of rainfall data.
- The least square error smoothing made it easy to choose the best smoothing parameter so that the average monthly rainfall functional data were determined. Therefore, the noise was decreased, and errors were eliminated.
- The Mean Absolute Error value obtained from the difference between mean monthly rainfall historical data and FDA is also displayed in ensuring the best distribution in the simulation. The gamma distribution is the best used to produce monthly rainfall simulations

REFERENCES

1. K. Rosenber, J. Boland & P. G. Howlett. (2004). Simulati of monthly rainfall totals, *ANZIAM J.* 46 (E) ppE85–E104,
2. Srikanthan, R., & McMahon, T. A. (2001). Stochastic generation of annual, monthly and daily

climate data: A review. *Hydrology and Earth System Sciences*, 5(4), 633–670.

3. Wilks, D. S., & Wilby, R. L. (1999). The weather generation game: a review of stochastic weather models. *Progress in Physical Geography*, 23(3), 329–357.
4. Stern, R. D., & Coe, R. (1984). A model fitting analysis of daily rainfall. *Journal of the Royal Statistical Society. Series A*, 147, Part 1, 1–34.
5. Wilks, D. S., & Wilby, R. L. (1999). The weather generation game: a review of stochastic weather models. *Progress in Physical Geography*, 23(3), 329–357.
6. Julia Piantadosi, John Boland & Phil Howlett. (2008). Generating Synthetic Rainfall on Various Timescales—Daily, Monthly and Yearly, *Environ Model Assess.* 14:431–438. doi 10.1007/s10666-008-9157-3
7. Dick, N. P., & Bowden, D. C. (1973). Maximum likelihood estimation for mixtures of two normal distributions. *Biometrics*, 29, 781–790.
8. Piantadosi, J., Howlett, P. G., & Boland, J. W. (2008). *A new model for correlated daily rainfall* (in press).
9. Sierra C, Flor-blanco G, Ordoñez C, Flor G, Gallego JR (2017) Analyzing coastal environments by means of functional data analysis. *Sediment Geol* 357:99–108
10. [10]. Bur R, Neumann C, Saunders CP (2015) Review and application of functional data analysis to chemical data—the example of the comparison, classification, and database search of forensic ink chromatograms. *Chemom Intell Lab Syst* 149:47–106
11. Müller H, Sen R, Stadtmüller U (2011) Functional data analysis for volatility. *J Econom* 165(2):233–245
12. Ramsay J. O. and Silverman B. W. *Applied Functional Data Analysis: Methods and Case Studies*. Springer. 2007.
13. Gao H. O., Niemeier D. A. Using functional data analysis of diurnal ozone and NOx cycles to inform transportation emissions control. *Transportation Research Part D: Transport and Environment*. 2008 June 1. 13(4): 221-38.
14. Laukaitis A, Rakauskas A. Functional data analysis for client’s segmentation tasks. *European Journal of Operational Research*. 2005 May 16. 163(1): 210-6.
15. Muñiz C. D., Nieto P. G., Fern´andez J. A., Torres J. M., Taboada J. Detection of outliers in water quality monitoring samples using functional data analysis in San Esteban estuary (Northern Spain).



The Applied of Functional Data Analysis to Comparison 100 Times Simulated Monthly Rainfall Using Some two Parameters Distribution”

Science of the Total Environment. 2012 Nov 15. 439: 54-60.

1. Makarewicz J., Saavedra 'A ., Garc'ia-Nieto P. J., Maci'neiro L., Iglesias C., Taboada J., Sancho J., Gasor J. Air quality parameters outlier's detection using functional data analysis in the Langreo urban area (Northern Spain). *Applied Mathematics and Computation*. 2014 Aug 15. 241: 1-0.

2. Dilarang mengemukakan dan memperbanyak sebagian atau seluruh karya tulis ini dalam bentuk apapun tanpa izin UIN Suska Riau.

3. Penguatan hanya untuk kepentingan pendidikan, penelitian, penulisan karya ilmiah, penyusunan laporan, penulisan kritik atau tinjauan satu masalah.

4. Penguatan tidak merugikan kepentingan yang wajar UIN Suska Riau.

1. Suhring R., Neumann C., Saunders C. P. Review on application of functional data analysis to chemical data—The example of the comparison, classification, and database search of forensic ink chromatograms. *Chemometrics and Intelligent Laboratory Systems*. 2015 Dec 15. 149: 97 106.

2. Sierra C Flor-Blanco G., Ordoñez C., Flor G., Salgado J.R. Analyzing coastalm environments by means of functional data analysis. *Sedimentary Geology*. 2017 July 15. 357: 99-108.

19. Ruiz-Bellido M. A., Romero-Gil V., Garc'ia-Garc'ia P., Rodr'iguez-G'omez F., Arroyo-L'opez F. N., Garrido-Fern'andez A. Assessment of table olive fermentation by functional data analysis. *International Journal of Food Microbiology*. 2016 Dec. 5. 238: 1-6.

20. Chebana F, Dabo-Niang S, Ouarda TBMJ (2012) Exploratory functional flood frequency analysis and outlier detection. *Water Resour Res* 48(4):1–20

21. Ramsay JO, Silverman B (2005) *Functional data analysis*. Springer, New York. https://doi.org/10.1007/b9888_8

22. Suhaila J, Yusop Z (2017) Spatial and temporal variabilities of rainfall data using functional data analysis. *Theor Appl Climatol* 129(1–2):229–242